

Corning Union High School Special School Board Meeting

DATE February 28, 2024

TYPE OF MEETING:
Special

TIME: 4:00 P.M.

MEMBERS ABSENT:

PLACE: Corning Union High School
Library

Jim Bingham

VISITORS:

MEMBERS PRESENT:

Tony Turri
Cody Lamb, Larry Glover
Todd Henderson

SCHOOL DISTRICT REPRESENTATIVES:

Jared Caylor, District Superintendent
Jason Armstrong, CUHS Principal
Justine Felton, CUHS Associate Principal
Audri Bakke, Centennial Principal
Heather Felciano, Director of Special Ed

THE CORNING UNION HIGH SCHOOL -

1. CALL TO ORDER: The meeting was called to order at 4:00 p.m. by Larry Glover.

2. PLEDGE OF ALLEGIANCE: Board President, Larry Glover asked the Board and audience to stand for the flag salute.

3. ROLL CALL: Board President, Larry Glover asked for a roll call.

Attendance is as follows:

- Tony Turri
- Cody Lamb
- Larry Glover
- Todd Henderson

Absent: Jim Bingham

**4. PUBLIC
COMMENT
ON STUDY SESSION
ITEMS:**

None.

5. STUDY SESSION

5.1 SCHOOL SAFETY-

Associate Principal, Justine Felton shared the following:

- School Climate Engagement
- Safety Preparedness
- Threat Prevention

School Climate and Engagement:

The cultivation of strong interpersonal relationships across the entire school community, encompassing students, teachers, families, and the broader community. It emphasizes fostering respect for diverse identities and viewpoints, including those based on race, culture, sexual orientation, and religion, while encouraging active involvement and participation in school activities.

**Connection between school climate and safety
Higher level of safety and trust = critical in prevention**

Strong Relationships: Building positive relationships among students, teachers, staff, administrators, and parents creates a sense of belonging and support within the school community.

Clear Expectations and Rules: Establishing clear expectations for behavior and academic performance, along with consistent enforcement of rules, promotes a safe and orderly environment where everyone knows what is expected of them.

Effective Communication: Open, transparent communication among all stakeholders fosters trust, collaboration, and problem-solving. This includes regular communication about school policies, events, and student progress.

Inclusivity and Equity: Promoting inclusivity, diversity, and equity ensures that every member of the school community feels valued, respected, and represented. This involves addressing issues of bias, discrimination, and inequity.

Supportive Learning Environment: Creating a supportive and nurturing learning environment where students feel safe to take risks, ask questions, and express themselves encourages academic engagement and achievement.

Physical and Emotional Safety: Prioritizing the physical and emotional safety of students and staff through measures such as anti-bullying initiatives, mental health support services, and crisis intervention plans.

Sense of Belonging and Connectedness: Cultivating a sense of belonging and connectedness among students and staff through shared experiences, traditions, and celebrations enhances overall well-being and school spirit.

Empowering Student Voice: Providing opportunities for students to actively participate in decision-making processes, express their opinions, and contribute to school initiatives empowers them and fosters a sense of ownership and responsibility.

Professional Development and Support: Offering ongoing professional development and support for teachers and staff to enhance their skills, promote self-care, and effectively address the needs of diverse learners.

Mental Health Prevention

4 School Counselors
5 Family Marriage Therapist
1 School Psychologist
Victor Services
ERHMS Service
TCDE Mental Health Service
TUPE Service
Health Aide
Wellness Coordinator

Social Emotional Learning

Embedded Lessons
Girls/Boys Group

Behavior Intervention

Classroom Management Strategies
Progressive Discipline Process
School Wide Learning Expectations
Dress Code
AVID Strategies
Detention
Verbal Praise - Positive Reinforcement

School Activities/Extracurricular Activities

California Scholastic Federation
Interact
Class Activities (rallies, assemblies, etc...)

Associated Student Body

FFA

ELAC

STARS (after school)

- Tutoring
- Robotics
- Weightlifting
- Crafts
- Book Club
- Anime
- Smash Bros
- Pixel Art
- Drivers Ed
- Food Handlers
- CPR
- Transportation home
- After School Supper
- **athletic Teams**
- 5 Fall Sports (3G/2B)
- 3 Winter Sports (3G/3B)
- 5 Spring (3G/4B)

- **Relationships/Connection to Staff**
- 65 Credentialed Staff
- 4 Counselors
- 1 School Psychologist
- 20 Paraeducators
- 14 M&O Staff
- 6 Transportation
- 6 Food Service
- 2 Technology
- 15 Office Support
- 8 Other (Wellness/CTE...)
- 1 School Resource Officer
- 1 Campus Supervisor

- 144 total employees = 42 Alumni

Threat Prevention

Threat Team- est. 2019

19 Active cases

142 inactive/left the district/graduated

3 kids recently came out of Rest Pad (Mental Health Treatment)

Workplace Violence Prevention Plan

Web and Device Filtering

GoGuardian

SysCloud

Anonymous Bully Reporting Online

Suicide Awareness Prevention and Training
Mental Health First Aid
Lethality Assessment

School Resource Officer

Wand Metal Detectors

PD for Staff

Gang Identification/Documentation
Suicide Awareness
Stop the Bleed - tourniquets

Corning PD access to cameras

Admin Supervision

Lunch

Athletic Events - Sometimes Admin will attend away games as needed.

Campus Supervisor

Closed Campus

Bathroom Sensors

Aggression, Vape, THC, Masking

Mass Shooting in K12 Schools- 5 FACTS

Most people who commit a mass shooting are in crisis leading up to it and are likely to leak their plans to others, presenting opportunities for intervention.

Everyone can help prevent school mass shootings.

Threat assessment is a promising prevention strategy to assess and respond to mass shooting threats, as well as other threats of violence by students.

Individuals who commit a school shooting are most likely to obtain a weapon by theft from a family member, indicating a need for more secure firearm storage practices.

The overwhelming majority of individuals who commit K-12 mass shootings struggle with various aspects of mental well-being.

A video was shared about preventing gun violence.

Safety Preparedness

Emergency Preparedness

Prevention - Run, Hide, Fight

Mitigation - DIR-S App

Preparedness -Practice

Response - Stop the Bleed, tourniquets

Recovery-Reunite

Visitor Management

Visitors to check in

Building and Site Mapping

PD, Fire, EMS

Marked doors

Safety Training

Staff CPR/1st aid training

Run Hide Fight

Bulletin Announcement

DIR -S App

Lockdown Buckets/Tourniquets

AED's/CPR/First Aid

Situational Awareness

Play the “what if” game

Active Shooter Training

Surviving an active shooter - no guidelines/procedures

There is no profile of an active assailant

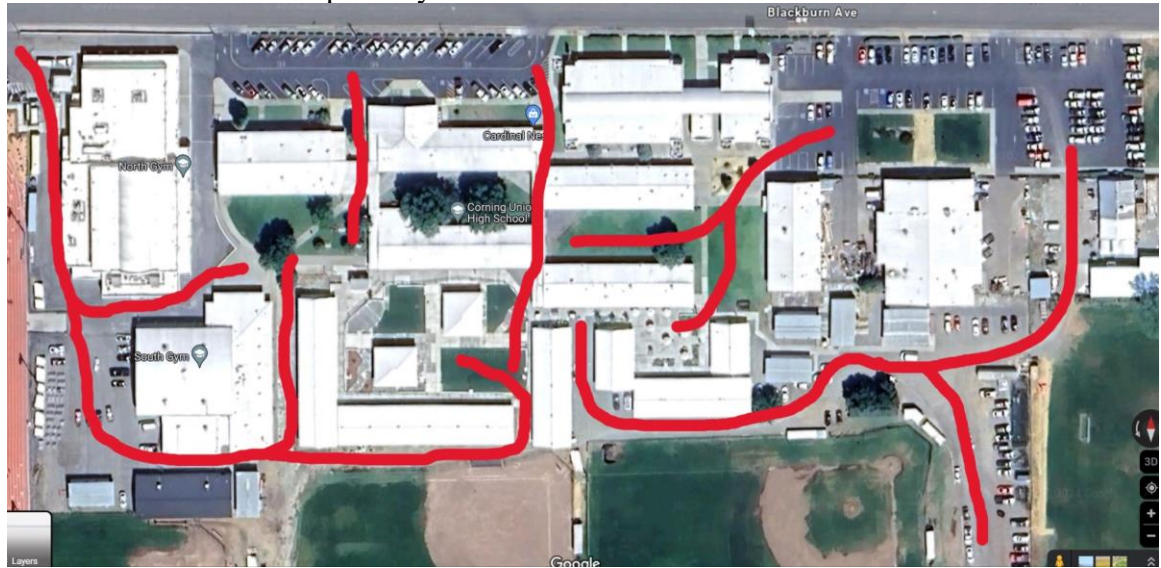
- Indicators but no profile
- Anyone at anytime
- Current student
- Former student
- Current employee
- Former Employee
- Community Member
- Non-community member

Safety Improvements

- Add cameras around campus - 10 (CUHS), 5 (Centennial)
- Finish placing cameras in vans - 5 cameras
- Anonymous community hotline - in collaboration with Corning PD
- Safety Security film on all windows - primary windows that face exterior.
- Continued Training - Staff, Students, Community Partners - PD, Fire, Sheriff

- Active Shooter Trainings for bus drivers
- Additional campus supervisor (female)

The diagram below shows all of the open points on campus where a car could possibly drive in.



Mrs. Felton would like to add fencing for controlled access and to increase better traffic flow. This would give a sense of safety. Right now, by the Ag Parking lot, anyone can just drive right in.

Safety Improvements best option

Adding features like no climb fencing, bollards, and a single entry point can significantly enhance safety and security at a high school in several ways:

1. ****Deterrence:**** No climb fencing acts as a physical barrier, making it harder for unauthorized individuals to gain access to the school grounds. The presence of such barriers can deter potential intruders or vandals from attempting to enter the premises.
2. ****Controlled Access:**** A single entry point allows for better control over who enters and exits the school. This means that staff can monitor individuals more effectively, verify their identity if necessary, and prevent unauthorized access.
3. ****Improved Traffic Flow:**** With only one designated entry point, vehicular and pedestrian traffic can be better managed, reducing congestion and potential safety hazards around the school premises. Bollards can help regulate the flow of vehicles and prevent unauthorized vehicles from entering restricted areas.

Centennial has no entry point and vehicles can drive through campus from various points.

The Back fence is not secure and there is a tree that creates a natural ladder.



Associate Principal, Justine Felton is requesting the Board to consider designating funds towards enhancing safety measures at our school. Mrs. Felton proposes investing in the installation of no climb fencing, bollards, establishing a single-entry point system, enhancing surveillance capabilities, and continued training in prevention measures. These enhancements will significantly bolster security on campus, ensuring the safety and well-being of our students, staff, and visitors. She believes that these investments are essential in maintaining a secure learning environment and mitigating potential risks.

Board President, Larry Glover asked how many cameras are on campus. Corning Union High School has 51 and there are 13 at Centennial/Adult Ed. Associate Principal, Justine Felton shared that there are some areas where there are no cameras and some of the newer ones (quad area) are really great and can capture a lot of footage and record all the time. There was a discussion of whether these had audio.

Board Member, Cody Lamb discussed the fencing options and Mrs. Felton would like to have it by the buildings rather than the perimeter around the entire campus. There was further discussion of the fencing types in case of an emergency. There would need to be emergency access.

Board Clerk, Tony Turri asked about the 19 active cases. He asked for examples:

1. Suicidal
2. Writing
3. Pills
4. Statements like "I am going to kill myself"
5. Home issues
6. Social Media Posts

An example was shared of a student who was recently having issues at home and spent a few days in Rest Pad. This is a mental health facility. He is now out with supportive parents and is doing better. He is getting the help that is offered and needed.

There was a discussion if the kids are causing harm to themselves or to others. Mrs. Felton confirmed that this is mostly to themselves. She shared an example of a student who wanted to shoot up St. Elizabeth because of some medical staff that he wasn't happy about.

Board Clerk, Tony Turri asked about a mass shooting. Mrs. Felton shared that we had an emergency back in 2016. There were guns in the back of campus. Officer Pryatel was there and all responders were very quick. Mrs. Felton shared that luckily it was a pellet gun but it was quite scary.

There were discussions of whether we can lock down the school remotely and we cannot but we have a subscription where we can communicate to staff quickly and there is communication with Corning PD as well.

Superintendent, Jared Caylor shared that TCDE uses an ID Card to enter the building a lot of districts are looking to move that way. It has some advantages and might be a good idea to begin using them for the gyms, main offices. We would be able to lock things down using this type of system. This probably wouldn't be costly and we wouldn't have to hard wire anything. Jared will talk to Jason Enos when he returns to research.

There was discussion of the bus area and the gates for loading.

Board Clerk, Tony Turri asked about the app that we use DIR-S and if every teacher has a school phone. Mrs. Felton shared that not everyone does but they can access from their desktop computer or cell phone. They may be able to access using their watches if needed. Superintendent, Jared Caylor shared that management and staff who is required to use phones, receive a \$70 stipend each month.

Board Member, Cody Lamb shared that the culture at CUHS is very important as Mrs. Felton shared in her presentation. Years ago, students wanted to come to school because they liked it here. Associate Principal, Justine Felton thinks that there is a shift in the culture but that is everywhere. We have to keep trying. There are things like Homecoming and Float Sites that we want to keep. Maybe even start new traditions but keep some of the old ones too.

Board President shared that addressing the areas where people can get into campus should be focuses on first. That might be the best starting point. The discussion was maybe placing bollards in certain areas to prevent cars from getting in would be a good idea. They even have decorative ones now days. Once the parking lot is completed, staff will need to enter in through the back-parking lot.

Superintendent, Jared Caylor shared that there are certain things that we as educators that benefit a large chunk of our students and we can't lose sight of that. Maybe Tier II numbers may have shifted and grown but this doesn't lessen Tier I. Things like violence prevention, building relationships and school culture are important and should remain important.

Board Clerk, Tony Turri asked about the threat assessment that was down and what was our vulnerability. Mrs. Felton shared we are low right now and Centennial is moderate. There was a discussion about the gangs in the area and how that is growing, not only in Corning but surrounding areas.

Board Member, Cody Lamb shared that Superintendent, Jared Caylor represented the Board and District very well at the last 2x2x2 meeting and there is a disconnect with the City and the schools. We need to work on building relationships with Corning PD and know when a high-risk kid will be coming back to campus. Examples were shared and the group discussed that fact that this is happening on other levels too such as Probation and Juvenile Hall. Superintendent, Jared Caylor shared that the DA's office is well versed on these issues and seems frustrated with the state as well.

The Board thanked Ms. Felton for a great job.

5.2 FACILITIES STUDY SESSION-

Superintendent, Jared Caylor shared the following:

General Fund - \$4,211,083
Safer Communities Grant - \$700,000 (Safety Only)
CTEIG - \$200,000 (Shop Equipment Only)
Developer Fees - \$397,592
State Facilities Grants - \$6,028,948

Total - \$11,637,623

Less Parking (\$3,682,836)

Remaining - \$7,954,787

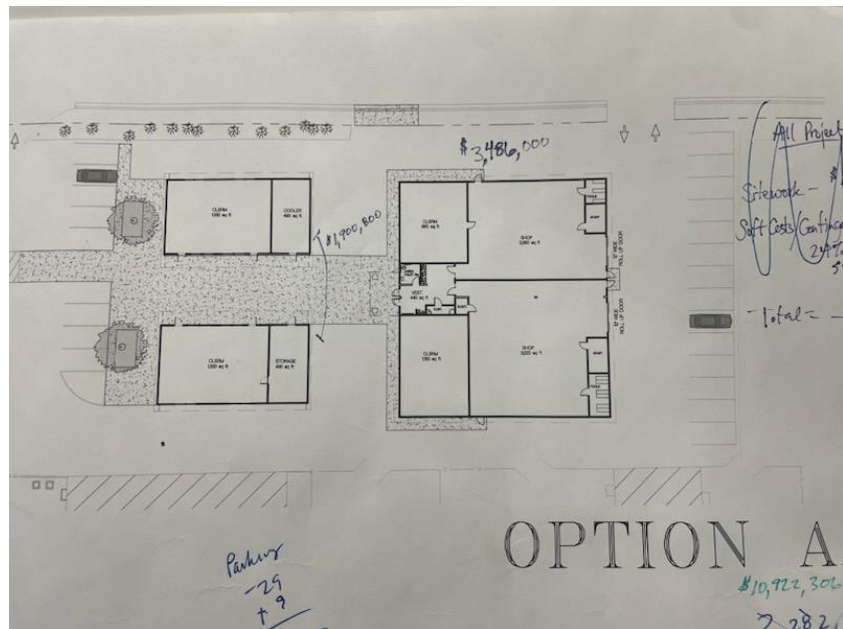
Items from Facilities Master Plan (Approved August 2022)

- Historical Recognition in Quad
- New Ag Shop and Classrooms
- New Transportation Facility
- Kitchen Improvements
- Main Office Modernization and District Office Construction
- Safety Improvements including Campus Fencing
- Ranch Projects
- Energy/Water Upgrades

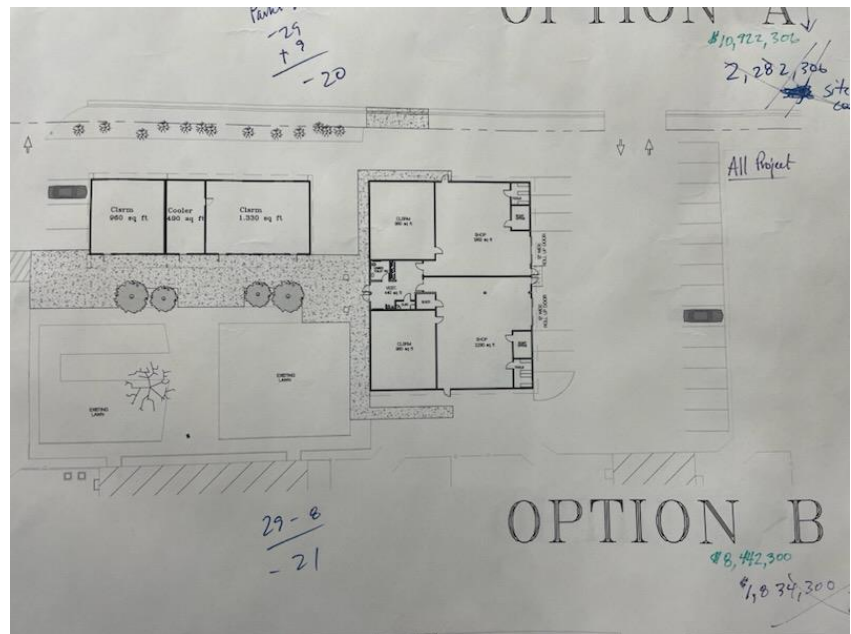
Ag Shop Options

- Option A - \$10,922,306
 - 8,400 sq ft shop space, two 1,920 sq ft classrooms
- Option B - \$8,442,300
 - 6,460 sq ft shop space, one 1,920 sq ft classroom, one 960 sq ft classroom
- Option C - \$7,750,980
 - 5,540 sq ft shop space, one 1920 sq ft classroom, one 960 sq ft classroom
- Option D - \$7,160,607
 - Shop Only from Option A, plus site work for future classrooms
- Option E - \$5,585,888
 - Shop Only from Option B, plus site work for future classrooms
- Option F - \$4,900,031
 - Shop Only from Option C, plus site work for future classrooms
- Current Ag Mechanics Shops are Approx 2,500 square feet each

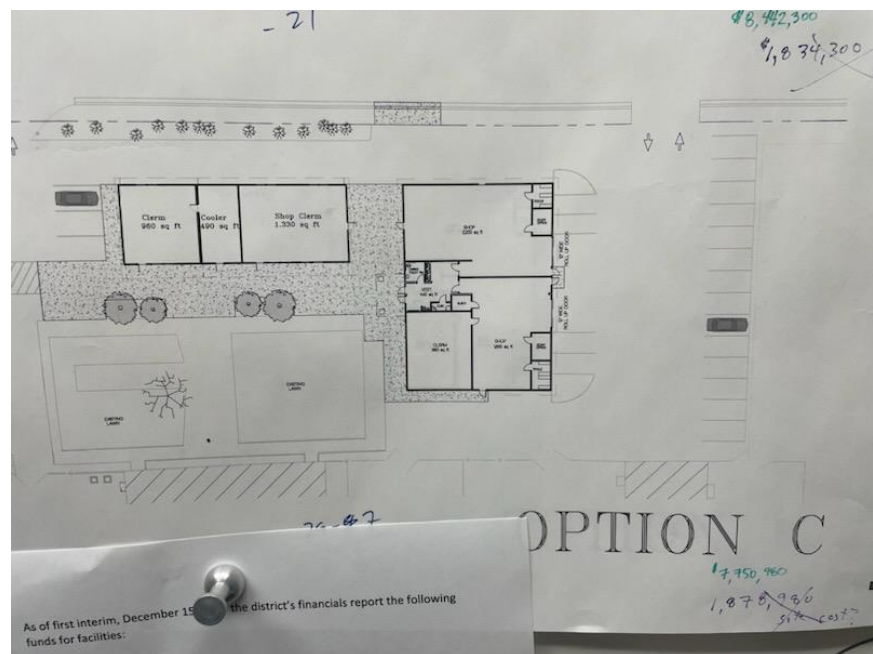
- Option A - \$10,922,306
 - 8,400 sq ft shop, two 1,920 sq ft classrooms
- Option D - \$7,160,607
 - Shop Only from Option A, plus site work for future classrooms



- Option B - \$8,442,300
 - 6,460 sq ft shop, one 1,920 sq ft classroom, one 960 sq ft classroom
- Option E - \$5,585,888
 - Shop Only from Option B, plus site work for future classrooms



- Option C - \$7,750,980
 - 5,540 sq ft shop, one 1920 sq ft classroom, one 960 sq ft classroom
- Option F - \$4,900,031
 - Shop Only from Option C, plus site work for future classrooms



Discussions included:

- 960 sq. ft may for classrooms may be larger than what is needed.
- The district could go with option D, E and F and use the existing shop for floral.
- The district can move Gary's manufacturing and gain a classroom.
- What should be done with Bob Safford's old shop space.
- The discussion was that the department would like to be together if possible.

- Board Member, Cody Lamb shared that if we are going to do a shop, we need to do it right. Board Member, Todd Henderson thinks that maybe we go with a bigger shop and can focus on the extra classrooms later on down the line.
- Funding will be easier to just put in a few classrooms.
- Do we modernize and what classified modernization vs. remodel.

Superintendent, Jared Caylor spoke with Zane Schreder today and he reminded Jared that when we submit applications for modernization funding they look at all classrooms by the # on SDA plan. They look at how the district has grown. We can lose some eligibility if we put classrooms in on our own. Superintendent, Jared Caylor would like to contact our consultant. Can we approach this in a way that would be beneficial to the district 20 years from now.

DEF = shop only options

ABC = classroom options

CUHS Principal, Jason Armstrong suggested taking a look at the shop in Red Bluff. The shop isn't huge but perhaps it is similar to what we might need. Superintendent, Jared Caylor will make arrangements to go see Red Bluff's shop and even PV's shop. He can take Nolan along with him to get a feel for what he thinks once he sees them.

Board Discussion, Next Steps

- Proceed w/ Shop?
 - If so, which option?
- Proceed w/ Fencing?
 - If not, other safety upgrades?
- Other next project?
 - Transportation
 - District Office
 - Kitchen Remodel
 - Energy Upgrades (Solar, etc)

The shop remains a priority to the Board.

- Shop only- to maximize space
- Homework on options
- #'s and information from PV and Red Bluff
- Input from staff (bring back options to the board)
- Would like to continue to work with Zane on this project due to his experience

Fencing

700K for fencing- will that be enough to cover the entire project

What type of fencing

What area(s)

Board President, Larry Glover asked what if we don't have enough fencing to do both campuses. We should probably focus on the areas that have gaps. Mrs. Felton would have to think about that. Board Member,

Todd Henderson thinks that Centennial needs some attention regardless and Superintendent, Jared Caylor thinks we can take care of that for around 2K.

Board Clerk, Tony Turri asked about cameras and how much they would cost. Mrs. Felton shared that the cost would run about 20K. Board Member, agrees that cameras are important and would put them in soon. He would like to find out more about how much the fencing is going to cost.

Superintendent, Jared Caylor has enough information from the Board and will have to do some homework.

Next projects to be thinking of:

- Transportation
- District Office
- Kitchen Remodel
- Energy Upgrades

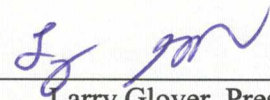
Board Clerk, Tony Turri asked what the thoughts for District Office were. Superintendent, Jared Caylor shared that the idea would be to use portion of the library to make more space or a location off site of the high school.

The Board shared the broad idea of thinking about real estate for the Master Facilities Plan.

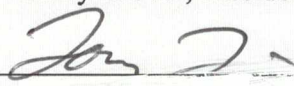
6. ADJOURNMENT:

A motion was made by Cody Lamb and seconded by Todd Henderson to adjourn the meeting at 5:31 p.m.

Approved



Larry Glover, President



Tony turri
clerk